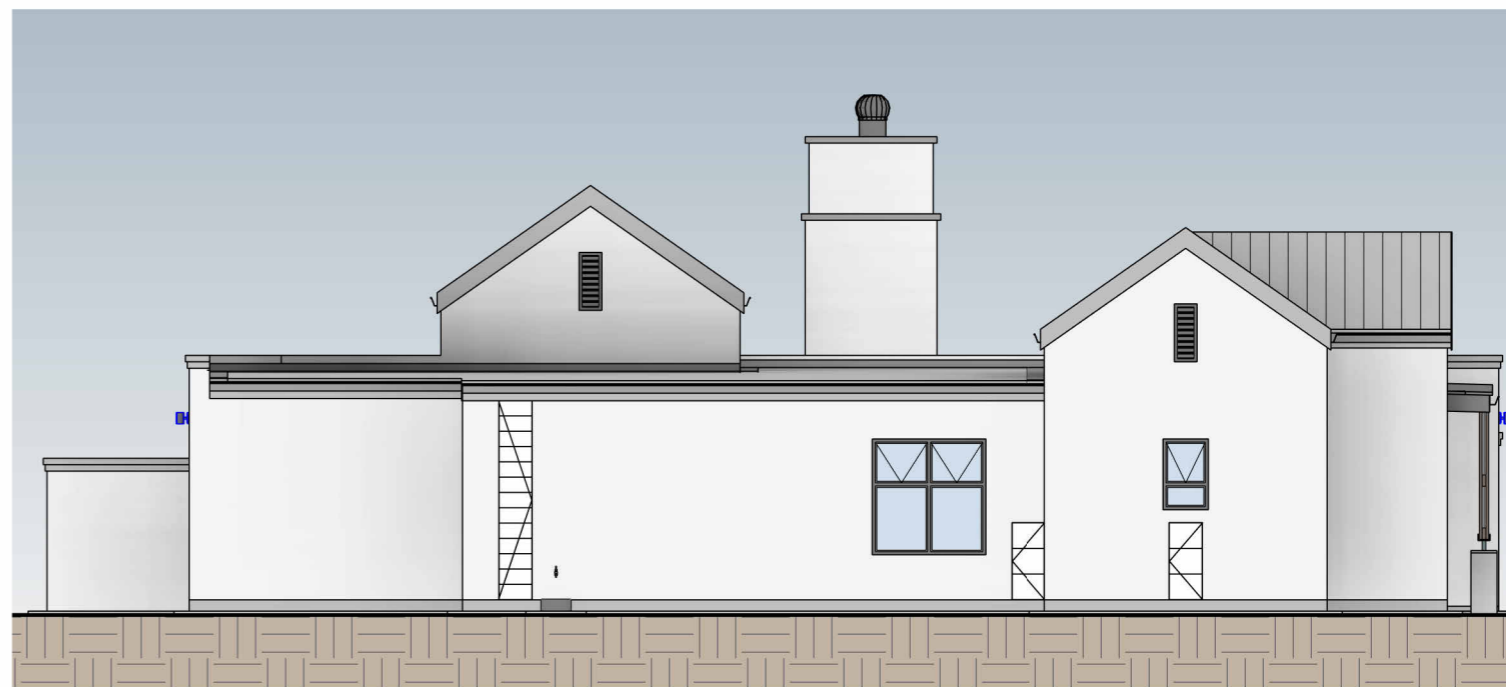


= EXPOSED TRUSSES

GROSS BUILDING AREA		
Number	Name	Area
1	HOUSE	123.06 m ²
2	GARAGE	41.97 m ²
3	COVERED PATIO	16.10 m ²
4	COVERED ENTRANCE	3.29 m ²
TOTAL BUILDING AREA		184.42 m²
5	YARD	10.34 m ²
GROSS BUILDING AREA		194.75 m²

HOUSE TYPE D - FLOOR PLAN

REV. A
2026



URBAN COUNTRY ESTATE

HOUSE TYPE D - ELEVATIONS

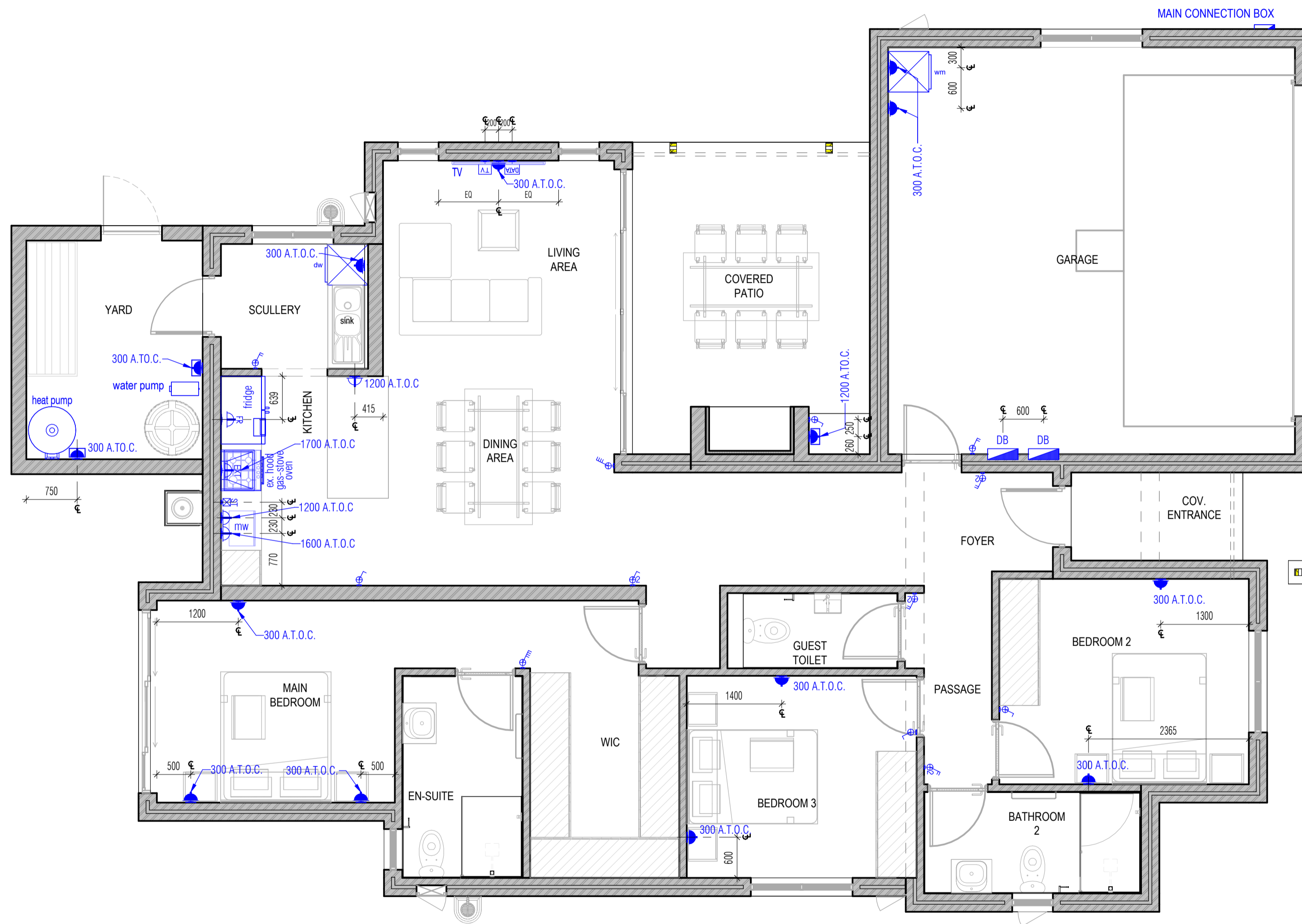
REV. A
2026



HOUSE TYPE D - 3D VIEW

REV. A
2026

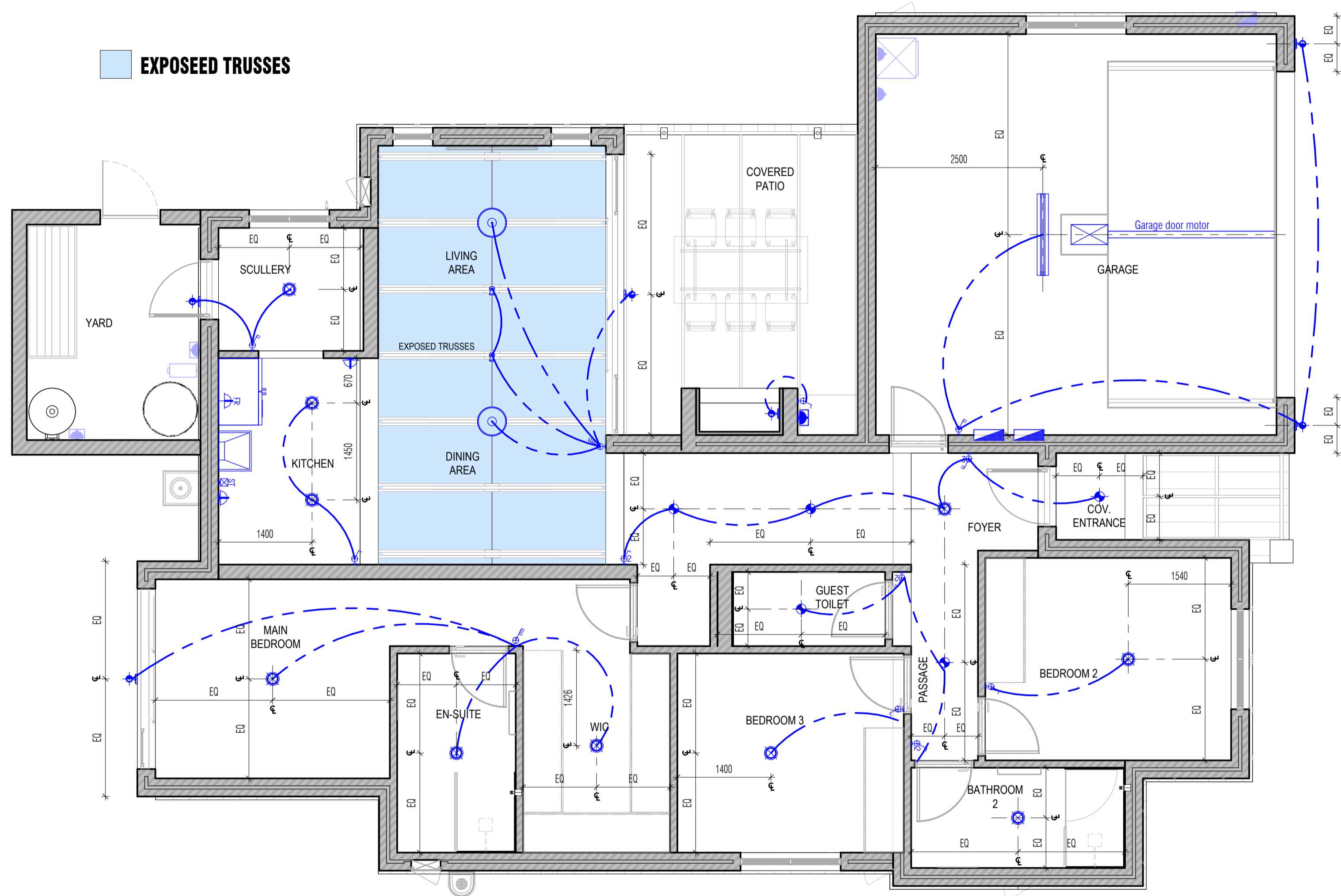
ELECTRICAL FITTINGS LEGEND	
	SINGLE SOCKET OUTLET @ 300mm above T.O.C.
	EXTERNAL SOCKET OUTLET @ 300mm above T.O.C.
	SINGLE SOCKET OUTLET @ 1200mm above T.O.C.
	OUTLET @ 1800mm above T.O.C. FOR EXTRACTOR
	DATA POINT
	T.V. POINT
	SINGLE LIGHTSWITCH @ 1400mm above T.O.C.
	DOUBLE LIGHTSWITCH @ 1400mm above T.O.C.
	TRIPLE LIGHTSWITCH @ 1400mm above T.O.C.
	DISTRIBUTION BOARD



HOUSE TYPE D - ELECTRICAL LAYOUT

REV. A
2026

LIGHT FITTINGS LEGEND	
	CEILING MOUNTED PENDANT LIGHT FITTING
	TRUSS MOUNTED LIGHT FITTING
	TUBE LIGHT FITTING
	LED DOWNLIGHTER FITTING
	ROUND BULKHEAD LIGHT FITTING
	LED ROPE LIGHT
	CYLINDRICAL WALL MOUNTED FITTING - DOWN ONLY
	WALL MOUNTED LED LIGHT FITTING ON DAY/NIGHT SWITCH
	POINT ONLY, FITTING BY OTHERS
	SINGLE LIGHTSWITCH
	DOUBLE LIGHTSWITCH
	TRIPLE LIGHTSWITCH



HOUSE TYPE D - REFLECTED CEILING PLAN

REV. A
2026